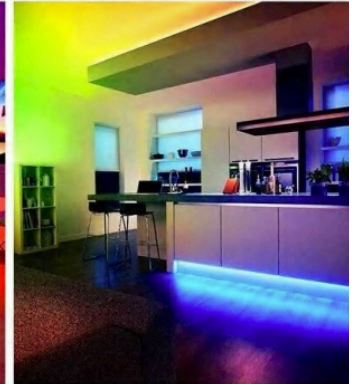




19.2W 24V 840 LED COB RGBCW STRIP

TECHNICAL

Watts Per Metre	19.2W
Input Voltage	24v DC
Colour Temp	RGB + 3000-6000K
Beam Angle	120°
IP Rating	IP20
Size	10mm (W) x 2mm (H)
CRI	-
Lamp Expectancy	>50,000hrs
Wiring	Parallel
Dimmable	Yes
LED Chip Type	COB
Max Run	10m
Roll Length	5m
Cutting Increments	50mm
Mounting	Aluminium Profile or Heat Sink
Operating Temperature	0 - + 60° Celcius
Ambient Temperature	-20° - + 50° Celcius
Warranty	3 Years Replacement



COMPATIBLE CONTROLLERS



SMART 5 IN 1 CONTROLLER




RGB/RGBW CONTROLLER



RGBCW DALI CONTROLLER

PRODUCT ORDERING

Image	Part Number	Colour Temp	Lumens	Description
	TLI-BAR-19.2W-RGBCWCOB	RGB+3000-6000K	1362lm	5M RGBCW COB STRIP